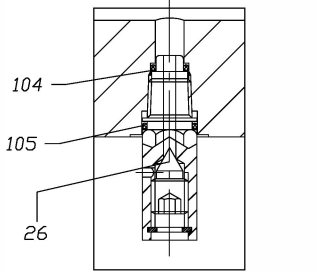
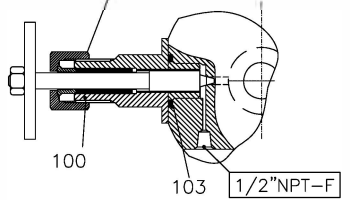


POS.	COMPONENTS	MATERIALS	NOTES
01	BODY	ASTM A350 LF2 CL.1	
02	BODY END	ASTM A350 LF2 CL.1	
03	BODY STUD	ASTM A320 L7M	(4)
04	BODY NUT	ASTM A194 7M (S3)	(4)
05	BODY FS GASKET	GRAPHITE	(5)
06	BODY O-RING	ENDURA V91A	
07	BALL	ASTM A 479 S31803	(7)
08	SEAT	ASTM A 479 S31803	(7)
09	SEAT O-RING	ENDURA V91A	
10	BACK-SEAT RING	ASTM A 479 S31803	
11	SEAT GASKET	GRAPHITE	(5)
13	BALL BUSHING	SS316/PTFE	
14	SEAT SPRING	INCONEL X-750	
15	STEM	INCONEL 718	
16	STEM SEAL RING	PEEK	
17	STEM FS GASKET	GRAPHITE	(5)
18	STEM SEAL	ENDURA V91A	
19	STEM NUTS	AISI 316	
20	GLAND	ASTM A350 LF2	
21	SPRING WASHER	AISI 301	
22	TRUNNION	ASTM A 479 S31803	
23	TRUNNION O-RING	ENDURA V91A	
24	CAPSCREW	ASTM A320 L7M	(4)
25	TRUNNION FS GASKET	GRAPHITE	(5)
26	VENT/DRAIN BLEEDER	LF2	(6)
28	STOP	SS316	
29	LEVER	CARBON STEEL	
32	STEM SEAL RING	REINFORCED PTFE	
100	NEEDLE VALVE	LF2	
103	GASKET	SS316+GRAPHITE	(5)
104	DRAIN SEAL	ENDURA V91A	
105	DRAIN SEAL	ENDURA V91A	
	LOCKING DEVICE	AISI 316	

NOTES
 4) ZINC / NICKEL PLATED - 10µ
 5) GRAPHITE WITH CORROSION INHIBITOR
 6) WITH 2 O-RING (ENDURA V91A)
 7) TUNGSTEN CARBIDE COATING 150 µm

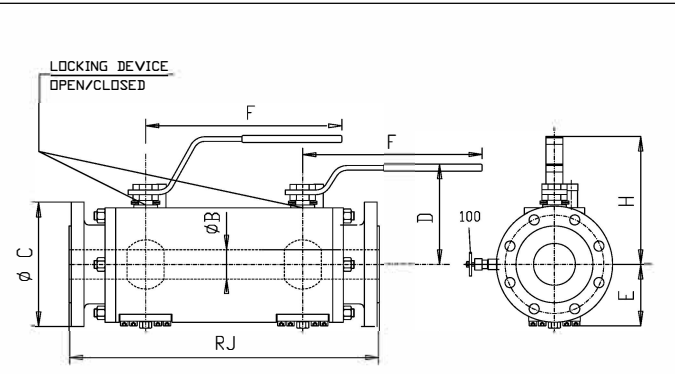
DETAIL "W"
NEEDLE VALVE (THREADED)



VENT/DRAIN BLEEDER DETAIL
1/4" NPT

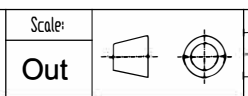
ITEM	TAG
027	HV1S18D
028	HV1S23D

NPS	CLASS	RJ	ØB	ØC	D	E	F	H	WEIGHT
3/4"x1/2"x3/4"	1500	380	19	130.5	110	80	400	173	18



DESIGN TEMPERATURE:
-46° C To +200° C

- GENERAL NOTES:**
- BALL VALVES ARE ACCORDING TO NACE MR0175
 - DIMENSIONS ARE IN mm
 - APPROX.WEIGHT IN KG
 - DESIGN/CONSTR. : API 6D / ASME B 16.34
 - END TO END DIMENSION : MANUFACTURE'S STD
 - FLANGE DIMENSIONS : ASME B 16.5
 - ANTISTATIC DEVICE
 - FIRE SAFE TEST : API 607 / ISO 10497
 - PRESSURE TEST : API 598 / API 6D



Design by: JZ Checked by: DB Approved by: MZ Date: 31-03-2014
 Description : GENERAL ASSEMBLY DRAWING / BILL OF MATERIAL
 Model Type: DBB TRUNNION BALL VALVE FULL BORE - CLASS 1500
 Dwg. Nr.: 140018-014 Rev: 00