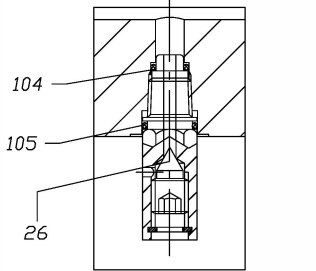
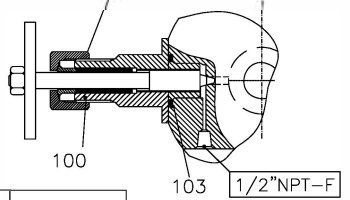


| POS. | COMPONENTS | MATERIALS | NOTES |
|------|--------------------|-------------------|-------|
| 01 | BODY | ASTM A182 F55 | |
| 02 | BODY END | ASTM A182 F55 | |
| 03 | BODY STUD | ASTM A320 L7M | (4) |
| 04 | BODY NUT | ASTM A194 7M (S3) | (4) |
| 05 | BODY FS GASKET | GRAPHITE | (5) |
| 06 | BODY O-RING | ENDURA V91A | |
| 07 | BALL | ASTM A 479 S32760 | (7) |
| 08 | SEAT | ASTM A 479 S32760 | (7) |
| 09 | SEAT O-RING | ENDURA V91A | |
| 10 | BACK-SEAT RING | ASTM A 479 S32760 | |
| 11 | SEAT GASKET | GRAPHITE | (5) |
| 13 | BALL BUSHING | INC.625/PTFE | |
| 14 | SEAT SPRING | INCONEL X-750 | |
| 15 | STEM | ASTM A 479 S32760 | |
| 16 | STEM SEAL RING | PEEK | |
| 17 | STEM FS GASKET | GRAPHITE | (5) |
| 18 | STEM SEAL | ENDURA V91A | |
| 19 | STEM NUTS | AISI 316 | |
| 20 | GLAND | ASTM A 479 S32760 | |
| 21 | SPRING WASHER | AISI 301 | |
| 22 | TRUNNION | ASTM A 479 S32760 | |
| 23 | TRUNNION O-RING | ENDURA V91A | |
| 24 | CAPSCREW | ASTM A320 L7M | (4) |
| 25 | TRUNNION FS GASKET | GRAPHITE | (5) |
| 26 | VENT/DRAIN BLEEDER | F55 | (6) |
| 28 | STOP | SS316 | |
| 29 | LEVER | STAINLESS STEEL | |
| 32 | STEM SEAL RING | REINFORCED PTFE | |
| 100 | NEEDLE VALVE | F55 | |
| 103 | GASKET | INC.625+GRAPHITE | (5) |
| 104 | DRAIN SEAL | ENDURA V91A | |
| 105 | DRAIN SEAL | ENDURA V91A | |
| | LOCKING DEVICE | AISI 316 | |

NOTES
 4) ZINC / NICKEL PLATED - 10µ
 5) GRAPHITE WITH CORROSION INHIBITOR
 6) WITH 2 O-RING (ENDURA V91A)
 7) TUNGSTEN CARBIDE COATING 150 µm

DETAIL "W"
NEEDLE VALVE (THREADED)



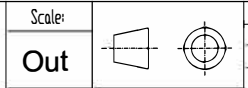
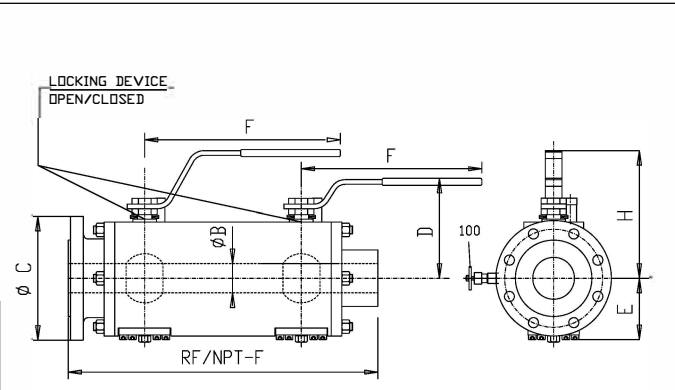
VENT/DRAIN BLEEDER DETAIL
1/4" NPT

| ITEM | TAG |
|------|------|
| 030 | HOLD |
| 031 | HOLD |

| NPS | CLASS | RF/NPT-F | øB | øC | D | E | F | H | WEIGHT |
|----------------|-------|----------|----|-----|-----|----|-----|-----|--------|
| 3/4"x1/2"x1/2" | 150 | 340 | 13 | 100 | 110 | 80 | 400 | 173 | 15 |

DESIGN TEMPERATURE:
-46° C To +120° C

GENERAL NOTES:
 -BALL VALVES ARE ACCORDING TO NACE MR0175
 -DIMENSIONS ARE IN mm
 -APPROX.WEIGHT IN KG
 -DESIGN/CONSTR. : API 6D / ASME B 16.34
 -END TO END DIMENSION : MANUFACTURE'S STD
 -FLANGE DIMENSIONS : ASME B 16.5
 -NPT END: ANSI B 1.20.1
 -RF SERRATED FINISH 125-250 AARH
 -ANTISTATIC DEVICE
 -FIRE SAFE TEST : API 607 / ISO 10497
 -PRESSURE TEST : API 598 / API 6D



| | | | |
|---|----------------|-----------------|------------------|
| Design by: JZ | Checked by: DB | Approved by: MZ | Date: 25-03-2014 |
| Description : GENERAL ASSEMBLY DRAWING / BILL OF MATERIAL | | | |
| Model Type: DBB TRUNNION BALL VALVE RED. BORE - CLASS 150 | | | |
| Dwg. Nr: 140018-011 | Rev: 00 | | |