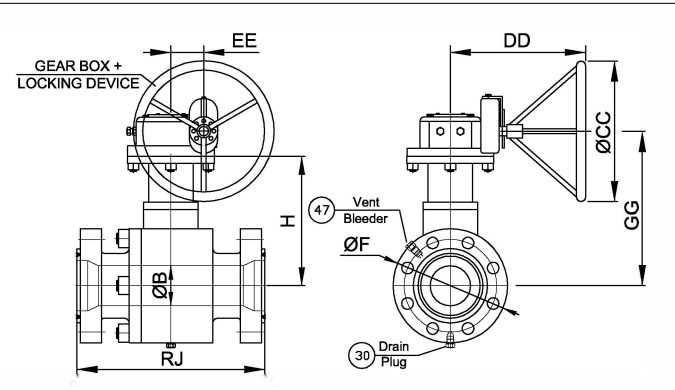


ITEM	TAG	ITEM	TAG
008	DP849	014	VP594
009	DP6535	015	DP852A
010	DP848	016	DP853A
011	DP847	032	SPARE
012	VP591A	033	SPARE
013	VP592		

N°	PART NAME	MATERIALS	NOTE	
1	BODY	ASTM A 479 S32760		
2RJ	BODY END	ASTM A 479 S32760		
3	BALL	ASTM A 479 S32760	(7)	
4	STEM	ASTM A 479 S32760		
5	SEAT	ASTM A 479 S32760	(7)	
*	6	O-RING	ELAST-O-LION 985	
*	7	O-RING	ELAST-O-LION 985	
*	8	GASKET	GRAPHITE	(5)
10	GLAND	ASTM A 479 S32760		
*	13A	GASKET	GRAPHITE	(5)
14	STUD	ASTM A 320 L7M	(4)	
21	BRACKET	ASTM A 479 S32760		
22	NUT	ASTM A 194 Gr.7M (S3)	(4)	
30	DRAIN PLUG 1/4" NPT	F55	(6)	
*	31	O-RING	ELAST-O-LION 985	
32	SPRING	INCONEL X 750		
36	STEM BEARING	S.S./PTFE COATED		
*	37	GASKET	GRAPHITE	(5)
*	41A	GASKET	GRAPHITE	(5)
43	SOCKET CAP SCREW	ASTM A 320 L7M	(4)	
45	THRUST BEARING	S.S./PTFE COATED		
47	VENT BLEEDER 1/4" NPT	F55	(6)	
*	49	O-RING	ELAST-O-LION 985	
53	BONNET	ASTM A 479 S32760		
76	UPPER THRUST BEARING	S.S./PTFE COATED		
78	BEARING RETAINER	ASTM A 240 S32760		
78A	BEARING RETAINER	ASTM A 240 S32760		
80	UPPER BEARING	S.S./PTFE COATED		
82	LOWER THRUST BEARING	S.S./PTFE COATED		
83	LOWER BEARING	S.S./PTFE COATED		

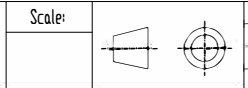
NOTE:
 4) ZINC / NICKEL PLATED
 5) GRAPHITE WITH CORROSION INHIBITOR
 6) VENT AND DRAIN WITH 2 O-RING (ELAST-O-LION 985)
 7) TUNGSTEN CARBIDE COATING 150 µm
 *) SUGGESTED SPARE PARTS FOR 2 YEARS OPERATIONS



DESIGN TEMPERATURE:
 -46° C To +120° C

GENERAL NOTES:
 -BALL VALVES ARE ACCORDING TO NACE MR0175
 -DIMENSIONS ARE IN mm
 -APPROX.WEIGHT IN KG
 -DESIGN/CONSTR. : API 6D / ASME B 16.34
 -END TO END DIMENSION : ASME B16.10 / API 6D
 -FLANGE DIMENSIONS : ASME B 16.5
 -ANTISTATIC DEVICE
 -FIRE SAFE TEST : API 607 / ISO 10497
 -PRESSURE TEST : API 598 / API 6D

GEAR BOX										
NPS	CLASS	RJ	ØB	ØF (end)	H	Kg.	ØCC	DD	EE	GG
2"x1.1/2"	1500	371	38	216	175	78	400	250	70	215



Design by: JZ	Checked by: DB	Approved by: MZ	Date: 25-03-2014
Description: GENERAL ASSEMBLY DRAWING / BILL OF MATERIAL			
TRUNNION BALL VALVE RED. BORE - CLASS 1500			
Dwg. Nr.: 140018-007	Rev: 00		